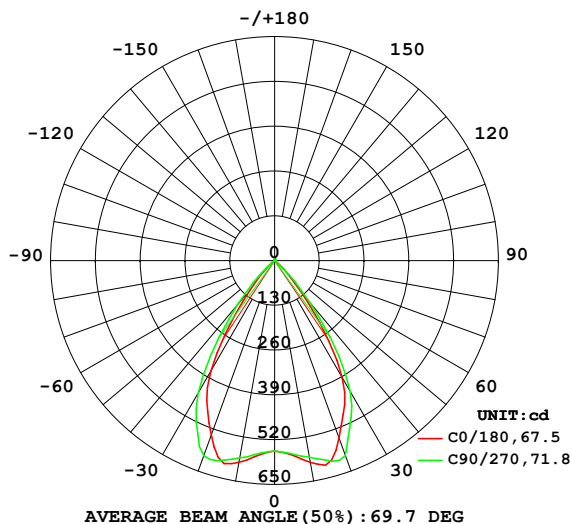


## LUMINAIRE PHOTOMETRIC TEST REPORT

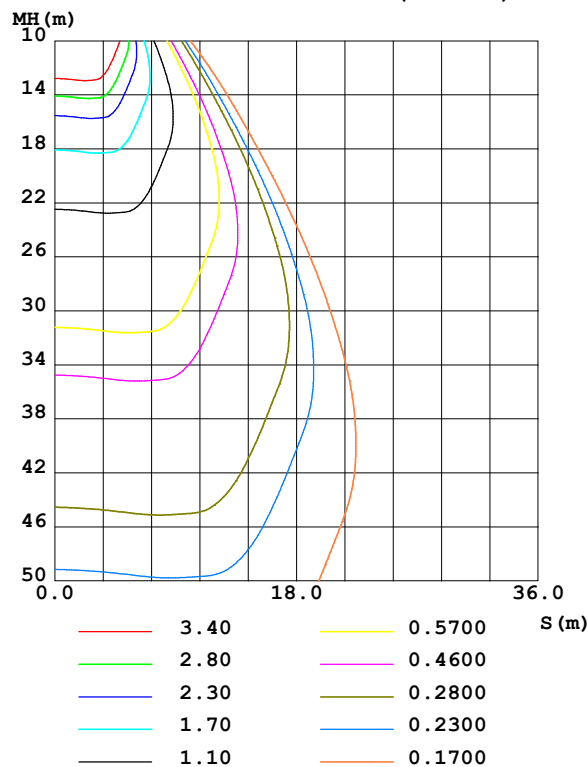
Test:U:220.70V I:0.0545A P:9.6854W PF:0.8057 Freq:49.99Hz UTHDi:0.00% ITHDi:0.00% KDisp:0 Lamp Flux:721.924x1 lm		
NAME: DL6098 3000K RA90 80D	TYPE:	WEIGHT:
SPEC.:	DIM.:	SERIAL No.:
MFR.: VJC lighting	SUR.: 29*29*5	Shielding Angle:

DATA OF LAMP		PHOTOMETRIC DATA Eff: 74.54 lm/W			
MODEL	DL6098 3000K RA90 80D	I <sub>max</sub> (cd)	626.5	S/MH(C0/180)	0.97
NOMINAL POWER(W)	10	LOR(%)	100.0	S/MH(C90/270)	1.04
RATED VOLTAGE(V)	220	TOTAL FLUX(lm)	721.92	η UP,DN(C0-180)	0.5,49.5
NOMINAL FLUX(lm)	721.924	CIE CLASS	DIRECT	η UP,DN(C180-360)	0.4,49.6
LAMPS INSIDE	1	η up (%)	0.9	CIBSE SHR NOM	1.00
TEST VOLTAGE(V)	220	η down (%)	99.1	CIBSE SHR MAX	1.10

LUMINOUS INTENSITY DISTRIBUTION DIAGRAM



C0 PLANE ISOLUX DIAGRAM (UNIT:lx)



C Range: 0 - 360DEG  
C Interval: 22.5DEG  
Test Speed: HIGH  
Temperature:25.3℃  
Operators:001  
Test Date:2025-04-25

γ Range: 0 - 180DEG  
γ Interval: 2.0DEG  
Test System:EVERFINE GO-2000B\_V1 SYSTEM V2.00.456  
Humidity:65.0%  
Test Distance:8.370m [K=1.0000]  
Remarks:

## ZONAL FLUX DIAGRAM

## ZONAL FLUX DIAGRAM:

$\gamma$	C0	C45	C90	C135	C180	C225	C270	C315	$\gamma$	$\Phi$ zone	$\Phi$ total	%lum, lamp
10	594.4	587.1	579.9	594.8	594.8	594.5	581.2	589.8	0- 10	54.74	54.74	7.58,7.58
20	547.8	618.8	601.9	611.0	538.1	609.1	602.4	620.6	10- 20	171.2	226.0	31.3,31.3
30	392.4	444.8	438.8	434.6	370.4	439.2	445.1	464.3	20- 30	238.2	464.2	64.3,64.3
40	123.3	197.9	161.2	171.8	111.2	180.1	169.2	195.1	30- 40	184.9	649.1	89.9,89.9
50	11.49	21.36	17.84	19.64	11.27	18.82	24.23	24.42	40- 50	57.53	706.7	97.9,97.9
60	2.333	2.855	2.370	2.745	2.305	2.986	2.783	3.103	50- 60	6.814	713.5	98.8,98.8
70	0.8927	0.6544	0.5361	0.6513	0.9052	0.7166	0.6654	0.6888	60- 70	1.358	714.8	99,99
80	0.3513	0.2165	0.1031	0.1590	0.3198	0.2350	0.1495	0.1997	70- 80	0.4885	715.3	99.1,99.1
90	0.0002	0	0	0	0	0	0	0	80- 90	0.0781	715.4	99.1,99.1
100	0	0	0	0.0028	0.0029	0.0167	0.0140	0.0112	90-100	0.0011	715.4	99.1,99.1
110	0.1406	0.1990	0.2189	0.2082	0.1826	0.2191	0.2168	0.2033	100-110	0.0851	715.5	99.1,99.1
120	0.5545	0.6446	0.7014	0.6693	0.6109	0.6597	0.6778	0.6288	110-120	0.3962	715.9	99.2,99.2
130	1.187	1.256	1.359	1.300	1.255	1.280	1.330	1.241	120-130	0.8452	716.7	99.3,99.3
140	1.899	1.916	2.031	1.973	1.987	1.964	2.010	1.899	130-140	1.248	718.0	99.5,99.5
150	2.491	2.461	2.564	2.532	2.602	2.551	2.570	2.464	140-150	1.411	719.4	99.6,99.6
160	2.952	2.899	2.986	2.999	3.063	3.022	2.995	2.895	150-160	1.268	720.7	99.8,99.8
170	3.496	3.522	3.602	3.627	3.597	3.626	3.592	3.498	160-170	0.9155	721.6	100,100
180	3.947	4.007	4.021	3.995	3.952	4.013	4.024	4.011	170-180	0.3590	721.9	100,100
DEG	LUMINOUS INTENSITY:cd									UNIT:lm		

Conical surface Flux(90deg): 694.96 lm

%lum = 96.3%

%lamp = 96.3%

Conical surface Flux(130deg): 714.48 lm

%lum = 99.0%

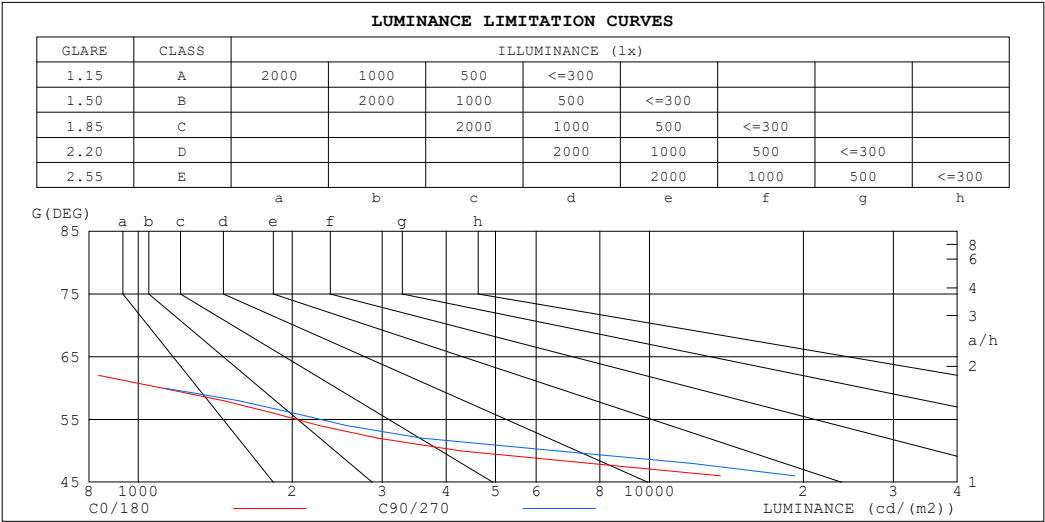
%lamp = 99.0%

C Range: 0 - 360DEG  
 C Interval: 22.5DEG  
 Test Speed: HIGH  
 Temperature:25.3℃  
 Operators:001  
 Test Date:2025-04-25

$\gamma$  Range: 0 - 180DEG  
 $\gamma$  Interval: 2.0DEG  
 Test System:EVERFINE GO-2000B\_V1 SYSTEM V2.00.456  
 Humidity:65.0%  
 Test Distance:8.370m [K=1.0000]  
 Remarks:

LUMINANCE LIMITATION CURVES

Test:U:220.70V I:0.0545A P:9.6854W PF:0.8057 Freq:49.99Hz		
UTHDi:0.00% ITHDi:0.00% KDisp:0 Lamp Flux:721.924x1 lm		
NAME: DL6098 3000K RA90 80D	TYPE:	WEIGHT:
SPEC.:	DIM.:	SERIAL No.:
MFR.: VJC lighting	SUR.: 29*29*5	Shielding Angle:



LUMINANCE cd/(m2)		
G (DEG)	C0/180	C90/270
85	478	46
80	483	141
75	610	319
70	623	372
65	727	512
60	1114	1126
55	2316	2619
50	4268	6593
45	21548	28989

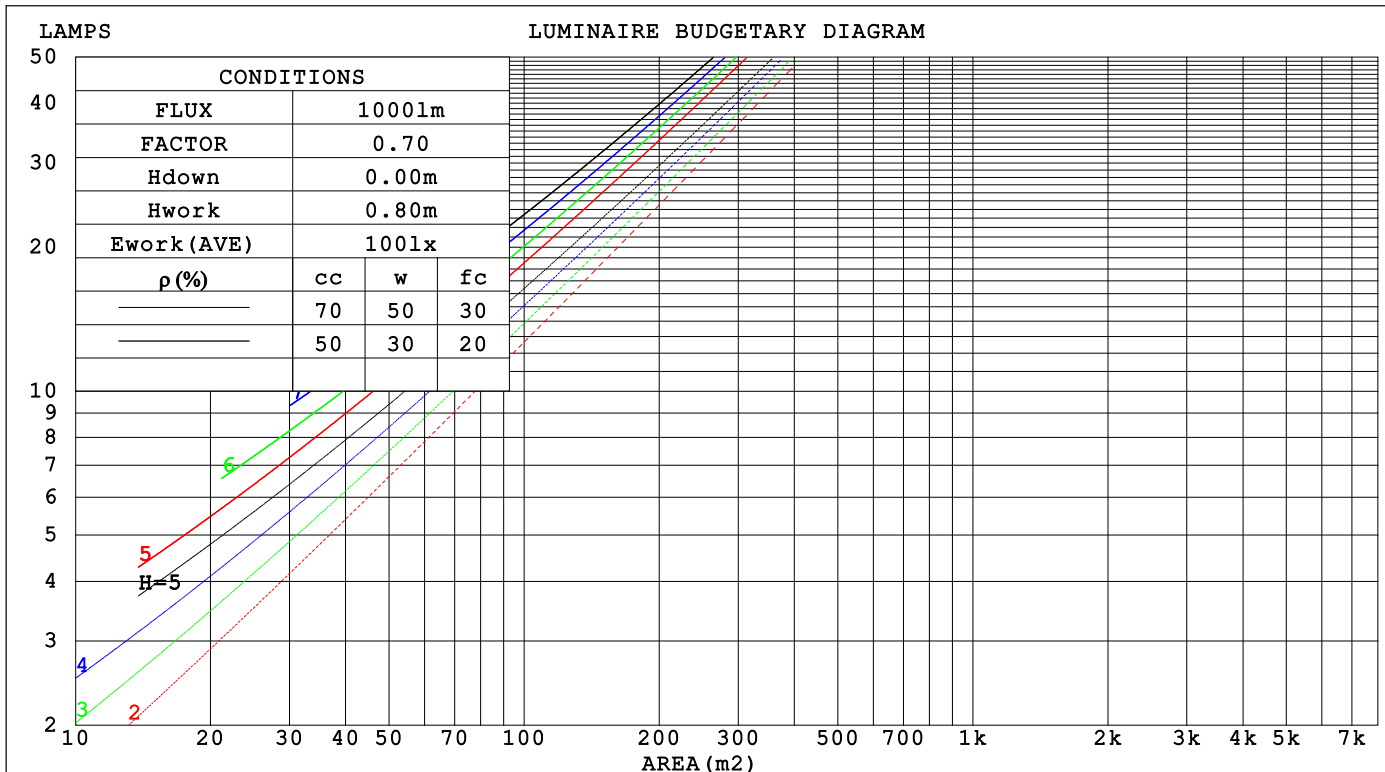
C Range: 0 - 360DEG  
C Interval: 22.5DEG  
Test Speed: HIGH  
Temperature:25.3℃  
Operators:001  
Test Date:2025-04-25

γ Range: 0 - 180DEG  
γ Interval: 2.0DEG  
Test System:EVERFINE GO-2000B\_V1 SYSTEM V2.00.456  
Humidity:65.0%  
Test Distance:8.370m [K=1.0000]  
Remarks:

## CU AND LUMINAIRE BUDGETARY ESTIMATE DIAGRAM

Test:U:220.70V I:0.0545A P:9.6854W PF:0.8057 Freq:49.99Hz		
UTHDi:0.00% ITHDi:0.00% KDisp:0 Lamp Flux:721.924x1 lm		
NAME: DL6098 3000K RA90 80D	TYPE:	WEIGHT:
SPEC.:	DIM.:	SERIAL No.:
MFR.: VJC lighting	SUR.: 29*29*5	Shielding Angle:

pcc	80%			70%			50%			30%			10%			0
pw	50%	30%	10%	50%	30%	10%	50%	30%	10%	50%	30%	10%	50%	30%	10%	0
pfc	20%			20%			20%			20%			20%			0
RCR	RCR:Room Cavity Ratio															



C Range: 0 - 360DEG  
C Interval: 22.5DEG  
Test Speed: HIGH  
Temperature:25.3℃  
Operators:001  
Test Date:2025-04-25

γ Range: 0 - 180DEG  
γ Interval: 2.0DEG  
Test System:EVERFINE GO-2000B\_V1 SYSTEM V2.00.456  
Humidity:65.0%  
Test Distance:8.370m [K=1.0000]  
Remarks:

### WEC AND CCEC

Test:U:220.70V I:0.0545A P:9.6854W PF:0.8057 Freq:49.99Hz			UTHDi:0.00% ITHDi:0.00% KDisp:0			Lamp Flux:721.924x1 lm		
NAME: DL6098 3000K RA90 80D			TYPE:			WEIGHT:		
SPEC.:			DIM.:			SERIAL No.:		
MFR.: VJC lighting			SUR.: 29*29*5			Shielding Angle:		

pcc	80%			70%			50%			30%			10%			0	
pw	50%	30%	10%	50%	30%	10%	50%	30%	10%	50%	30%	10%	50%	30%	10%	0	
pfc	20%			20%			20%			20%			20%			0	
RCR	RCR:Room Cavity Ratio						Wall Exitance Coefficients(WEC)										
0.0																	
1.0	.185	.105	.033	.178	.101	.032	.165	.094	.030	.153	.088	.028	.141	.082	.026		
2.0	.178	.098	.030	.172	.095	.029	.161	.090	.028	.151	.085	.026	.141	.080	.025		
3.0	.171	.091	.027	.166	.089	.027	.156	.084	.026	.147	.081	.025	.139	.077	.024		
4.0	.163	.085	.025	.159	.083	.025	.150	.080	.024	.143	.077	.023	.135	.074	.022		
5.0	.156	.079	.023	.152	.078	.023	.145	.075	.022	.138	.073	.022	.131	.070	.021		
6.0	.149	.075	.021	.146	.074	.021	.139	.071	.021	.133	.069	.020	.127	.067	.020		
7.0	.143	.071	.020	.140	.070	.020	.134	.068	.019	.128	.066	.019	.123	.064	.019		
8.0	.137	.067	.019	.134	.066	.019	.129	.064	.018	.124	.063	.018	.119	.061	.018		
9.0	.131	.063	.018	.128	.063	.018	.124	.061	.017	.119	.060	.017	.115	.059	.017		
10.0	.126	.060	.017	.123	.060	.017	.119	.058	.016	.115	.057	.016	.111	.056	.016		

pcc	80%			70%			50%			30%			10%			0	
pw	50%	30%	10%	50%	30%	10%	50%	30%	10%	50%	30%	10%	50%	30%	10%	0	
pfc	20%			20%			20%			20%			20%			0	
RCR	RCR:Room Cavity Ratio						Ceiling Cavity Exitance Coefficients (CCEC)										
0.0	.197	.197	.197	.169	.169	.169	.115	.115	.115	.066	.066	.066	.021	.021	.021		
1.0	.179	.164	.151	.153	.141	.130	.105	.097	.090	.060	.056	.052	.019	.018	.017		
2.0	.164	.139	.119	.141	.120	.103	.096	.083	.072	.056	.048	.042	.018	.016	.014		
3.0	.152	.121	.095	.131	.104	.083	.090	.072	.058	.052	.042	.034	.017	.014	.011		
4.0	.143	.106	.078	.122	.092	.068	.084	.064	.048	.049	.037	.028	.016	.012	.009		
5.0	.135	.095	.065	.116	.082	.057	.080	.057	.040	.046	.034	.024	.015	.011	.008		
6.0	.127	.086	.056	.110	.074	.048	.076	.052	.034	.044	.031	.020	.014	.010	.007		
7.0	.121	.078	.048	.104	.068	.042	.072	.048	.030	.042	.028	.018	.014	.009	.006		
8.0	.116	.072	.042	.100	.063	.037	.069	.044	.026	.040	.026	.016	.013	.008	.005		
9.0	.111	.067	.037	.096	.058	.033	.066	.041	.023	.039	.024	.014	.012	.008	.005		
10.0	.106	.063	.034	.092	.055	.029	.064	.038	.021	.037	.023	.012	.012	.007	.004		

C Range: 0 - 360DEG  
C Interval: 22.5DEG  
Test Speed: HIGH  
Temperature:25.3℃  
Operators:001  
Test Date:2025-04-25

γ Range: 0 - 180DEG  
γ Interval: 2.0DEG  
Test System:EVERFINE GO-2000B\_V1 SYSTEM V2.00.456  
Humidity:65.0%  
Test Distance:8.370m [K=1.0000]  
Remarks:

UGR(Unified Glare Rating) Table

Test:U:220.70V I:0.0545A P:9.6854W PF:0.8057 Freq:49.99Hz UTHDi:0.00% ITHDi:0.00% KDisp:0 Lamp Flux:721.924x1 lm										
NAME: DL6098 3000K RA90 80D						TYPE:		WEIGHT:		
SPEC.:						DIM.:		SERIAL No.:		
MFR.: VJC lighting						SUR.: 29*29*5		Shielding Angle:		
ceiling/cavity	0.7	0.7	0.5	0.5	0.3	0.7	0.7	0.5	0.5	0.3
walls	0.5	0.3	0.5	0.3	0.3	0.5	0.3	0.5	0.3	0.3
working plane	0.2	0.2	0.2	0.2	0.2	0.2	0.2	0.2	0.2	0.2
Room dimensions	Viewed crosswise					Viewed endwise				
x = 2H y = 2H	20.8	21.8	21.1	22.0	22.2	21.7	22.7	21.9	22.9	23.0
3H	20.6	21.6	20.9	21.8	22.0	21.5	22.4	21.8	22.6	22.8
4H	20.5	21.4	20.8	21.7	21.9	21.4	22.3	21.7	22.5	22.7
6H	20.5	21.3	20.8	21.5	21.8	21.3	22.1	21.6	22.4	22.6
8H	20.4	21.2	20.7	21.5	21.7	21.3	22.0	21.6	22.3	22.6
12H	20.4	21.1	20.7	21.4	21.7	21.2	22.0	21.5	22.2	22.5
4H 2H	20.5	21.4	20.8	21.7	21.9	21.4	22.3	21.7	22.5	22.7
3H	20.4	21.1	20.7	21.4	21.7	21.2	22.0	21.6	22.2	22.5
4H	20.3	20.9	20.6	21.3	21.6	21.1	21.8	21.5	22.1	22.4
6H	20.2	20.8	20.6	21.1	21.5	21.0	21.6	21.4	22.0	22.3
8H	20.1	20.7	20.5	21.0	21.4	21.0	21.5	21.4	21.9	22.3
12H	20.1	20.6	20.5	21.0	21.4	20.9	21.4	21.3	21.8	22.2
8H 4H	20.1	20.7	20.5	21.0	21.4	21.0	21.5	21.4	21.9	22.3
6H	20.0	20.5	20.5	20.9	21.3	20.9	21.3	21.3	21.7	22.2
8H	20.0	20.4	20.4	20.8	21.3	20.8	21.2	21.3	21.6	22.1
12H	19.9	20.3	20.4	20.7	21.2	20.8	21.1	21.2	21.6	22.0
12H 4H	20.1	20.6	20.5	21.0	21.4	20.9	21.4	21.3	21.8	22.2
6H	20.0	20.4	20.4	20.8	21.3	20.8	21.2	21.3	21.6	22.1
8H	19.9	20.3	20.4	20.7	21.2	20.8	21.1	21.2	21.6	22.0
Variations with the observer position at spacings(CIE Pub.117):										
S = 1.0H	+ 2.9 / -16.1					+ 2.8 / -17.5				
1.5H	+ 5.1 / -13.4					+ 4.9 / -14.4				
2.0H	+ 7.1 / -10.5					+ 7.2 / -13.1				

CIE Pub.117, 721.9 lm Total Lamp Luminous Flux Correct (8log(F/F0) = -1.1)  
Area: 0.004205 m2

C Range: 0 - 360DEG  
C Interval: 22.5DEG  
Test Speed: HIGH  
Temperature:25.3℃  
Operators:001  
Test Date:2025-04-25

γ Range: 0 - 180DEG  
γ Interval: 2.0DEG  
Test System:EVERFINE GO-2000B\_V1 SYSTEM V2.00.456  
Humidity:65.0%  
Test Distance:8.370m [K=1.0000]  
Remarks:

## UTILIZATION FACTORS TABLE

Test:U:220.70V I:0.0545A P:9.6854W PF:0.8057 Freq:49.99Hz UTHDi:0.00% ITHDi:0.00% KDisp:0 Lamp Flux:721.924x1 lm		
NAME: DL6098 3000K RA90 80D	TYPE:	WEIGHT:
SPEC.:	DIM.:	SERIAL No.:
MFR.: VJC lighting	SUR.: 29*29*5	Shielding Angle:

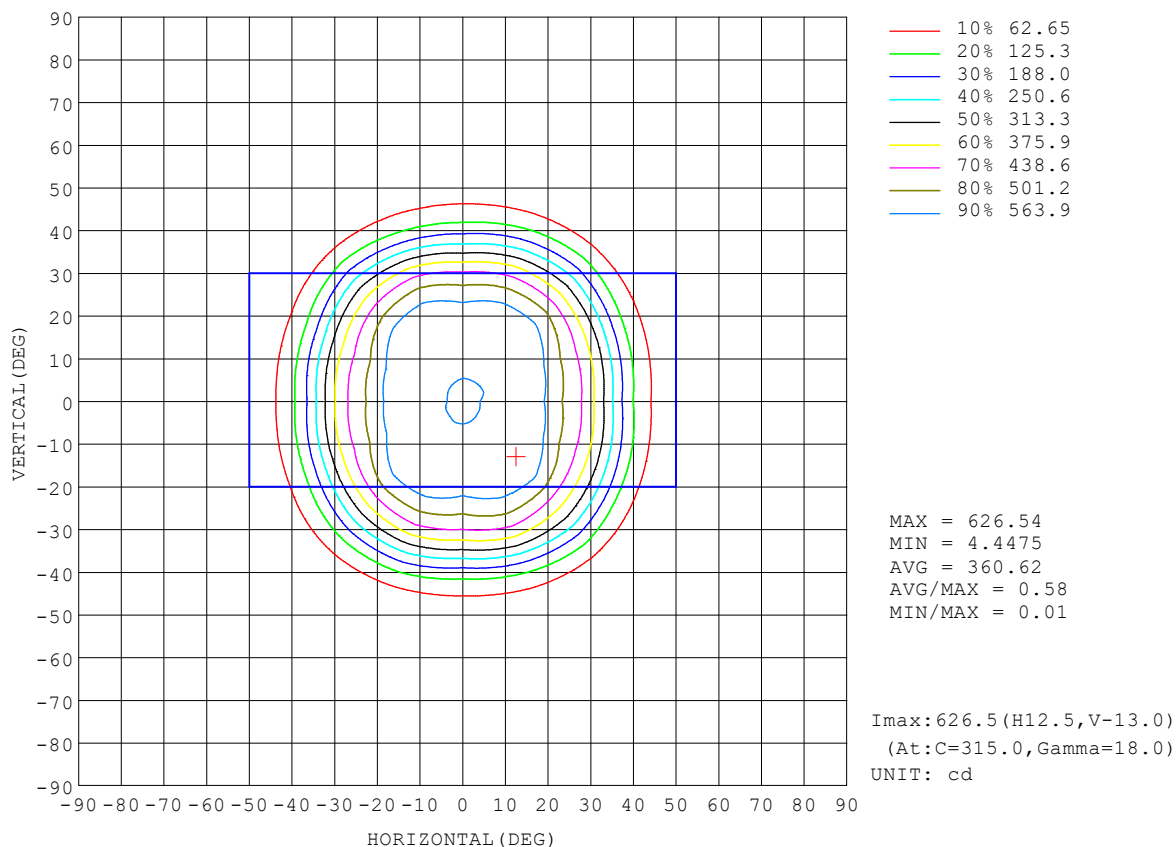
REFLECTANCE										
Ceiling	0.8	0.8	0.8	0.7	0.7	0.7	0.5	0.5	0.5	0
Walls	0.7	0.5	0.3	0.7	0.5	0.3	0.7	0.5	0.3	0
Working plane	0.2	0.2	0.2	0.2	0.2	0.2	0.2	0.2	0.2	0
ROOM INDEX	UTILIZATION FACTORS (PERCENT) $k(RI) \times RCR = 5$									
$k = 0.60$	85	79	75	85	78	74	84	78	74	70
0.80	93	87	83	92	86	83	91	86	82	78
1.00	98	92	88	97	92	88	95	91	87	83
1.25	102	97	93	101	96	93	99	95	92	87
1.50	105	100	97	104	99	96	101	98	95	90
2.00	108	104	100	106	103	100	104	100	98	92
2.50	110	106	103	108	104	102	105	102	100	93
3.00	111	108	105	109	106	104	106	103	101	95
4.00	113	110	108	111	109	107	107	105	104	96
5.00	115	112	110	112	110	109	108	107	105	97
ROOM INDEX	UF (total)									Direct
According to DIN EN 13032-2 2004			Suspended					SHRNOM = 1.25		

C Range: 0 - 360DEG  
 C Interval: 22.5DEG  
 Test Speed: HIGH  
 Temperature: 25.3 °C  
 Operators: 001  
 Test Date: 2025-04-25

γ Range: 0 - 180DEG  
 γ Interval: 2.0DEG  
 Test System: EVERFINE GO-2000B\_V1 SYSTEM V2.00.456  
 Humidity: 65.0%  
 Test Distance: 8.370m [K=1.0000]  
 Remarks:

## ISOCANDELA DIAGRAM

Test:U:220.70V I:0.0545A P:9.6854W PF:0.8057 Freq:49.99Hz UTHDi:0.00% ITHDi:0.00% KDisp:0 Lamp Flux:721.924x1 lm		
NAME: DL6098 3000K RA90 80D	TYPE:	WEIGHT:
SPEC.:	DIM.:	SERIAL No.:
MFR.: VJC lighting	SUR.: 29*29*5	Shielding Angle:



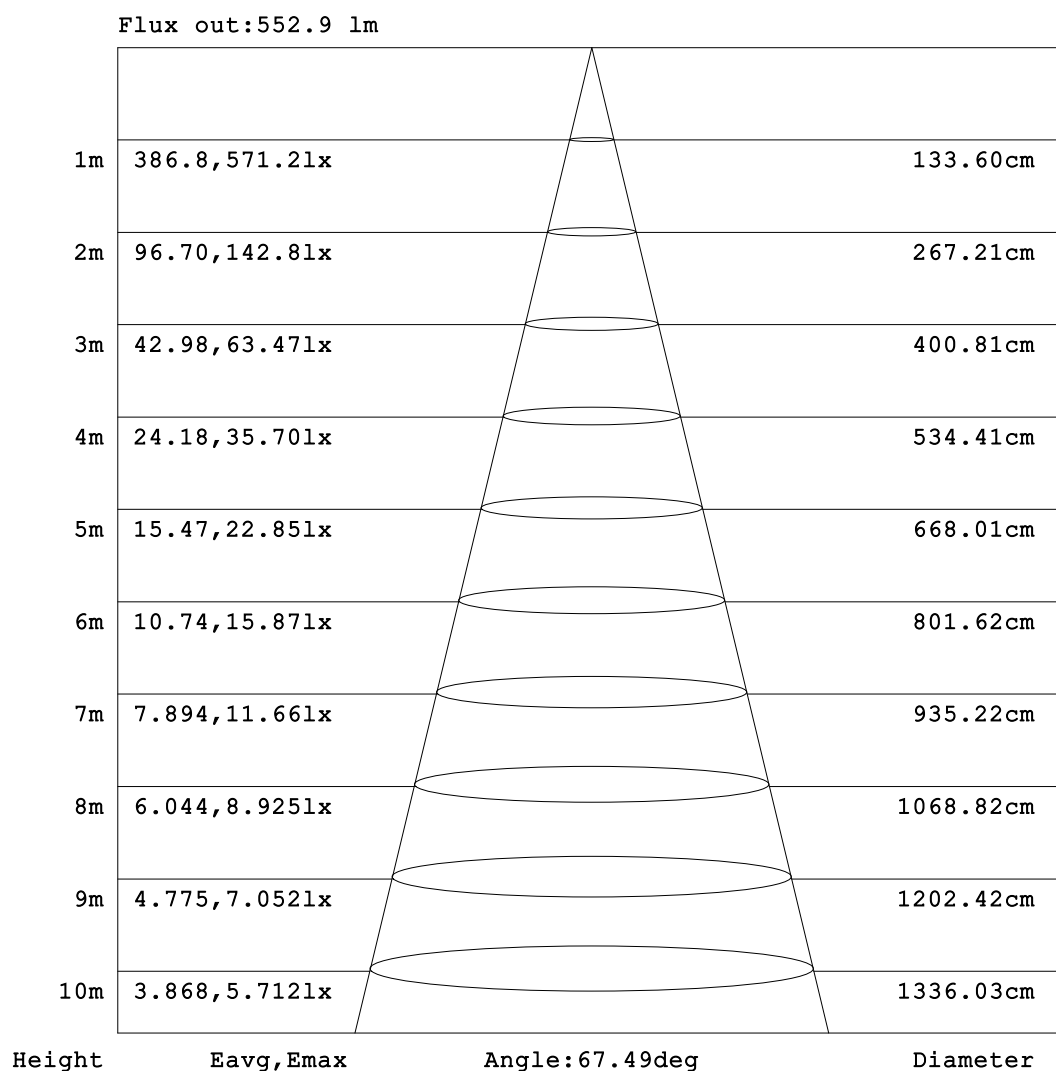
C Range: 0 - 360DEG  
C Interval: 22.5DEG  
Test Speed: HIGH  
Temperature:25.3℃  
Operators:001  
Test Date:2025-04-25

γ Range: 0 - 180DEG  
γ Interval: 2.0DEG  
Test System:EVERFINE GO-2000B\_V1 SYSTEM V2.00.456  
Humidity:65.0%  
Test Distance:8.370m [K=1.0000]  
Remarks:



### AAI Figure

Test:U:220.70V I:0.0545A P:9.6854W PF:0.8057 Freq:49.99Hz UTHDi:0.00% ITHDi:0.00% KDisp:0 Lamp Flux:721.924x1 lm		
NAME: DL6098 3000K RA90 80D	TYPE:	WEIGHT:
SPEC.:	DIM.:	SERIAL No.:
MFR.: VJC lighting	SUR.: 29*29*5	Shielding Angle:



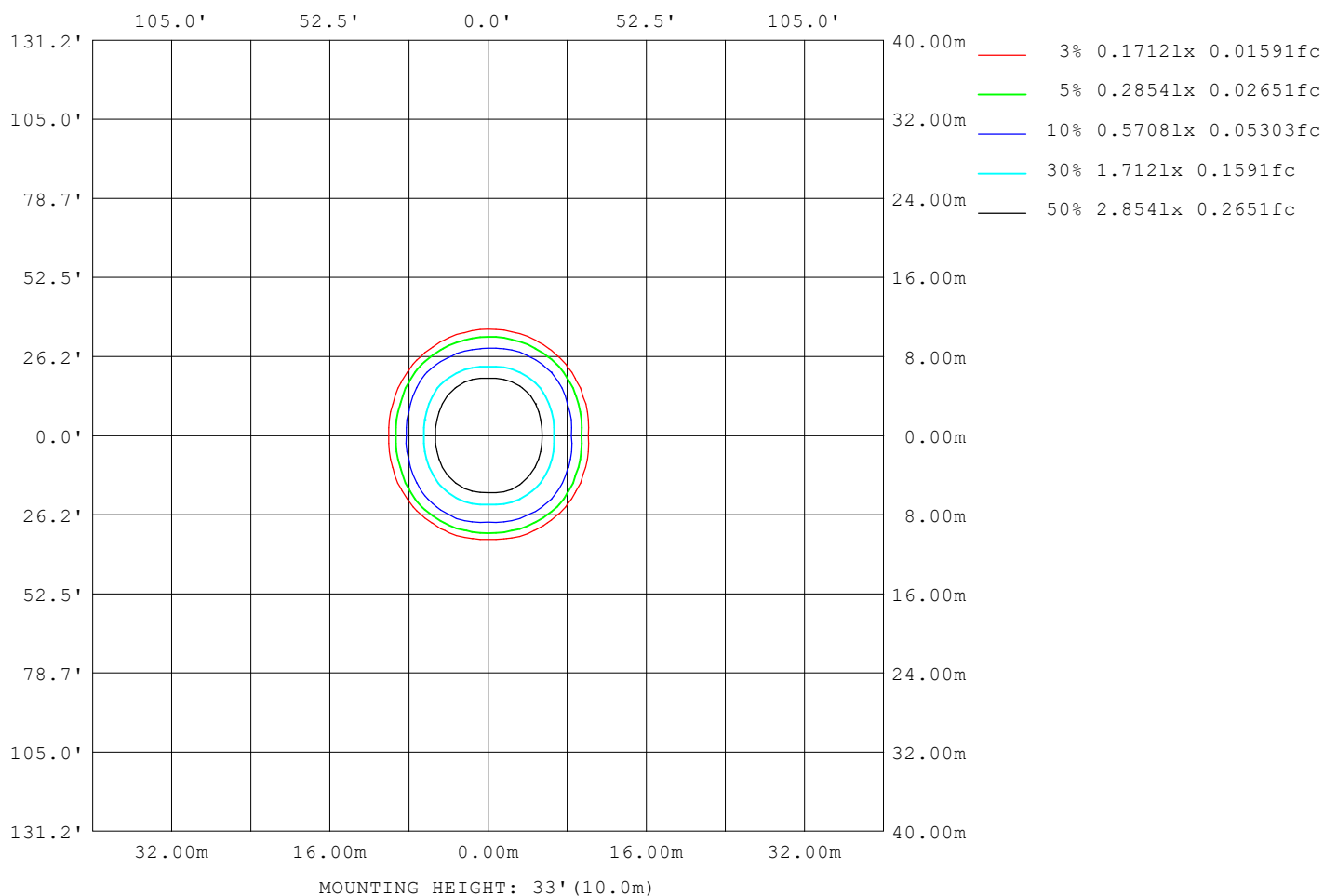
Note:The Curves indicate the illuminated area and the average illumination when the luminaire is at different distance.

C Range: 0 - 360DEG  
C Interval: 22.5DEG  
Test Speed: HIGH  
Temperature:25.3℃  
Operators:001  
Test Date:2025-04-25

γ Range: 0 - 180DEG  
γ Interval: 2.0DEG  
Test System:EVERFINE GO-2000B\_V1 SYSTEM V2.00.456  
Humidity:65.0%  
Test Distance:8.370m [K=1.0000]  
Remarks:

## ISOLUX DIAGRAM

Test:U:220.70V I:0.0545A P:9.6854W PF:0.8057 Freq:49.99Hz UTHDi:0.00% ITHDi:0.00% KDisp:0 Lamp Flux:721.924x1 lm		
NAME: DL6098 3000K RA90 80D	TYPE:	WEIGHT:
SPEC.:	DIM.:	SERIAL No.:
MFR.: VJC lighting	SUR.: 29*29*5	Shielding Angle:



C Range: 0 - 360DEG  
C Interval: 22.5DEG  
Test Speed: HIGH  
Temperature: 25.3°C  
Operators: 001  
Test Date: 2025-04-25

γ Range: 0 - 180DEG  
γ Interval: 2.0DEG  
Test System: EVERFINE GO-2000B\_V1 SYSTEM V2.00.456  
Humidity: 65.0%  
Test Distance: 8.370m [K=1.0000]  
Remarks:

## LED Avg.L Report

Test:U:220.70V I:0.0545A P:9.6854W PF:0.8057 Freq:49.99Hz UTHDi:0.00% ITHDi:0.00% KDisp:0 Lamp Flux:721.924x1 lm		
NAME: DL6098 3000K RA90 80D	TYPE:	WEIGHT:
SPEC.:	DIM.:	SERIAL No.:
MFR.: VJC lighting	SUR.: 29*29*5	Shielding Angle:

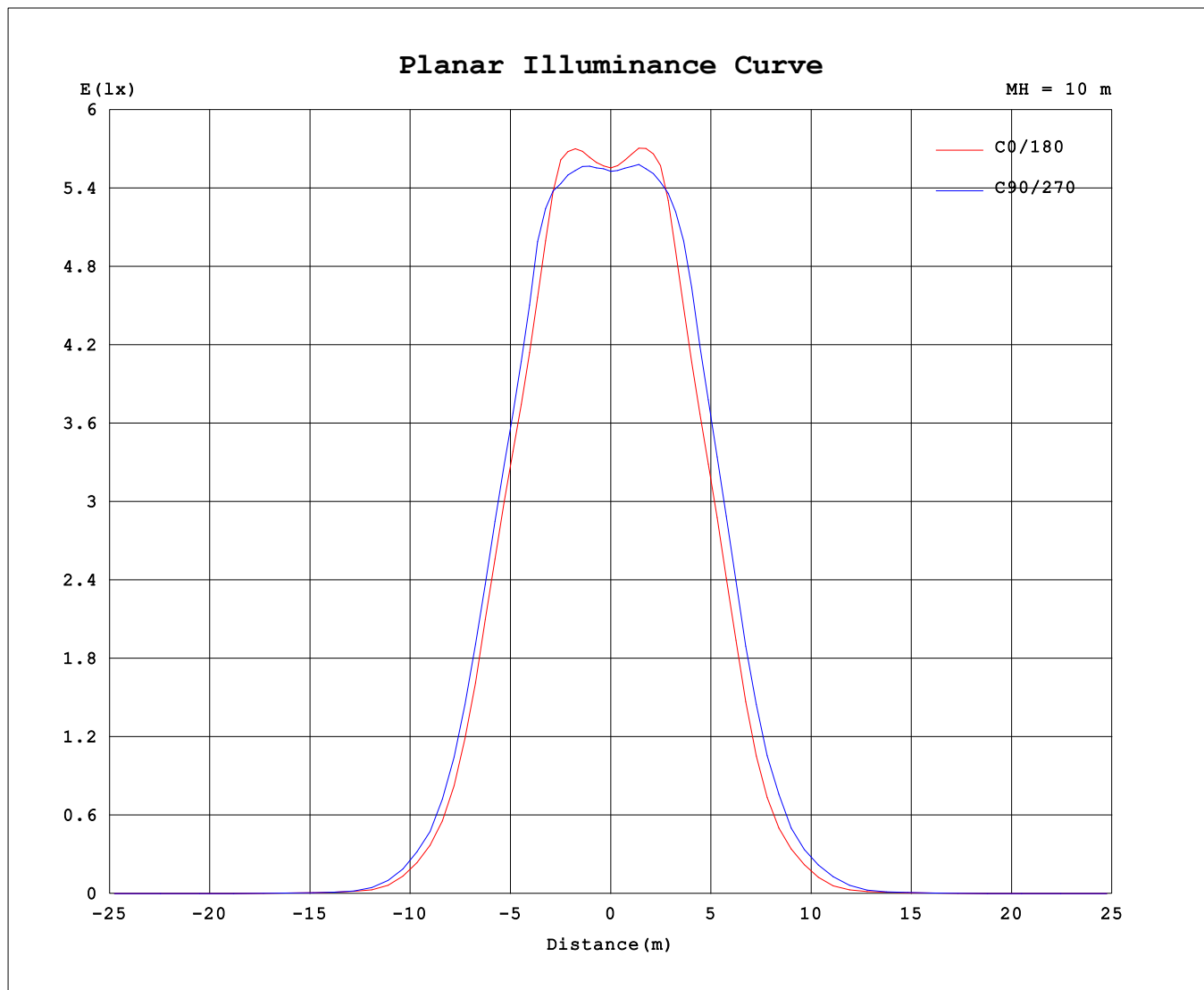
AvgL	cd/m2
L_0~180 (65) av	687
L_0~180 (75) av	553
L_0~180 (85) av	316
L_90~270 (65) av	511
L_90~270 (75) av	313
L_90~270 (85) av	30
L_45 (65) av	780
L_45 (75) av	397
L_45 (85) av	78

Standard: GB/T 29293-2012

C Range: 0 - 360DEG  
C Interval: 22.5DEG  
Test Speed: HIGH  
Temperature:25.3℃  
Operators:001  
Test Date:2025-04-25

γ Range: 0 - 180DEG  
γ Interval: 2.0DEG  
Test System:EVERFINE GO-2000B\_V1 SYSTEM V2.00.456  
Humidity:65.0%  
Test Distance:8.370m [K=1.0000]  
Remarks:

## Planar Illuminance Curve



C Range: 0 - 360DEG  
C Interval: 22.5DEG  
Test Speed: HIGH  
Temperature: 25.3 °C  
Operators: 001  
Test Date: 2025-04-25

γ Range: 0 - 180DEG  
γ Interval: 2.0DEG  
Test System: EVERFINE GO-2000B\_V1 SYSTEM V2.00.456  
Humidity: 65.0%  
Test Distance: 8.370m [K=1.0000]  
Remarks:

## LUMINOUS DISTRIBUTION INTENSITY DATA

Test:U:220.70V I:0.0545A P:9.6854W PF:0.8057 Freq:49.99Hz		
UTHDi:0.00% ITHDi:0.00% KDisp:0 Lamp Flux:721.924x1 lm		
NAME: DL6098 3000K RA90 80D	TYPE:	WEIGHT:
SPEC.:	DIM.:	SERIAL No.:
MFR.: VJC lighting	SUR.: 29*29*5	Shielding Angle:

Table--1

UNIT: cd

C (DEG) γ (DEG)	0	22.5	45	67.5	90	112.5	135	157.5	180	202.5	225	247.5	270	292.5	315	337.5			
0	553	553	553	553	553	553	553	553	553	553	553	553	553	553	553	553			
5	561	561	561	560	560	561	563	564	563	563	562	561	560	560	560	560			
10	594	591	587	581	580	586	595	597	595	596	595	586	581	586	590	593			
15	612	615	613	600	595	608	620	612	607	614	617	606	597	605	617	616			
20	548	570	619	612	602	619	611	556	538	554	609	611	602	615	621	575			
25	489	508	570	567	535	563	558	498	479	492	555	576	549	578	576	515			
30	392	414	445	468	439	457	435	394	370	392	439	465	445	468	464	418			
35	282	323	358	368	335	357	335	291	257	290	346	357	333	367	364	324			
40	123	161	198	186	161	184	172	130	111	129	180	171	169	189	195	152			
45	63.8	76.8	99.5	92.3	86.3	88.7	87.1	66.3	59.3	65.7	86.4	91.6	91.1	96.7	97.8	80.0			
50	11.5	19.1	21.4	26.2	17.8	21.8	19.6	17.3	11.3	16.1	18.8	26.5	24.2	28.8	24.4	19.2			
55	5.56	6.41	7.87	8.10	6.32	6.93	7.19	6.02	5.39	5.98	7.67	8.50	7.16	9.32	8.92	6.51			
60	2.33	2.66	2.85	2.75	2.37	2.69	2.75	2.47	2.31	2.57	2.99	2.94	2.78	3.07	3.10	2.64			
65	1.29	1.33	1.59	1.26	0.91	1.19	1.52	1.30	1.34	1.35	1.67	1.46	1.18	1.48	1.74	1.37			
70	0.89	0.79	0.65	0.56	0.54	0.55	0.65	0.81	0.91	0.88	0.72	0.72	0.67	0.69	0.69	0.84			
75	0.66	0.58	0.48	0.37	0.35	0.35	0.45	0.59	0.66	0.65	0.51	0.49	0.43	0.47	0.48	0.63			
80	0.35	0.30	0.22	0.12	0.10	0.08	0.16	0.28	0.32	0.33	0.23	0.21	0.15	0.19	0.20	0.33			
85	0.17	0.12	0.07	0.00	0.02	0.00	0.01	0.07	0.14	0.15	0.08	0.08	0.04	0.07	0.05	0.13			
90	0.00	0.00	0.00	0.00	0.00	0.00	0.00	0.00	0.00	0.00	0.00	0.00	0.00	0.00	0.00	0.00			
95	0.00	0.00	0.00	0.00	0.00	0.00	0.00	0.00	0.00	0.00	0.00	0.00	0.00	0.00	0.00	0.00			
100	0.00	0.01	0.00	0.03	0.00	0.03	0.00	0.01	0.00	0.00	0.02	0.00	0.01	0.00	0.01	0.00			
105	0.01	0.06	0.05	0.08	0.05	0.09	0.06	0.06	0.05	0.03	0.07	0.04	0.06	0.04	0.06	0.01			
110	0.14	0.19	0.20	0.23	0.22	0.25	0.21	0.21	0.18	0.16	0.22	0.20	0.22	0.18	0.20	0.15			
115	0.28	0.33	0.35	0.39	0.38	0.41	0.37	0.36	0.32	0.31	0.37	0.35	0.37	0.33	0.35	0.28			
120	0.55	0.61	0.64	0.71	0.70	0.73	0.67	0.65	0.61	0.60	0.66	0.66	0.68	0.64	0.63	0.56			
125	0.79	0.85	0.88	0.94	0.95	0.96	0.91	0.90	0.85	0.83	0.90	0.89	0.93	0.89	0.86	0.79			
130	1.19	1.23	1.26	1.34	1.36	1.36	1.30	1.30	1.25	1.24	1.28	1.29	1.33	1.28	1.24	1.17			
135	1.48	1.50	1.52	1.61	1.63	1.63	1.58	1.59	1.55	1.53	1.56	1.57	1.61	1.55	1.51	1.44			
140	1.90	1.91	1.92	2.01	2.03	2.03	1.97	2.00	1.99	1.95	1.96	1.97	2.01	1.94	1.90	1.85			
145	2.16	2.16	2.16	2.25	2.28	2.27	2.22	2.25	2.26	2.21	2.22	2.22	2.26	2.19	2.15	2.10			
150	2.49	2.49	2.46	2.53	2.56	2.56	2.53	2.59	2.60	2.55	2.55	2.53	2.57	2.49	2.46	2.44			
155	2.69	2.68	2.63	2.71	2.74	2.74	2.71	2.79	2.80	2.74	2.74	2.72	2.76	2.67	2.64	2.63			
160	2.95	2.93	2.90	2.97	2.99	3.01	3.00	3.08	3.06	3.03	3.02	2.99	3.00	2.92	2.89	2.88			
165	3.15	3.14	3.12	3.19	3.20	3.25	3.24	3.29	3.25	3.23	3.25	3.22	3.22	3.14	3.11	3.09			
170	3.50	3.52	3.52	3.60	3.60	3.65	3.63	3.66	3.60	3.61	3.63	3.59	3.59	3.51	3.50	3.48			
175	3.71	3.76	3.78	3.83	3.82	3.87	3.85	3.86	3.80	3.82	3.87	3.81	3.82	3.76	3.78	3.73			
180	3.95	3.97	4.01	4.01	4.02	4.03	3.99	3.98	3.95	3.96	4.01	4.00	4.02	4.00	4.01	3.95			

C Range: 0 - 360DEG

C Interval: 22.5DEG

Test Speed: HIGH

Temperature:25.3℃

Operators:001

Test Date:2025-04-25

γ Range: 0 - 180DEG

γ Interval: 2.0DEG

Test System:EVERFINE GO-2000B\_V1 SYSTEM V2.00.456

Humidity:65.0%

Test Distance:8.370m [K=1.0000]

Remarks: